

LED-Beacon

B2 RHODON max Basic

The B2 RHODON max Basic is designed for installation on large vehicles. It offers a large illuminated area and can therefore be easily recognized from a distance, despite the high installation location.

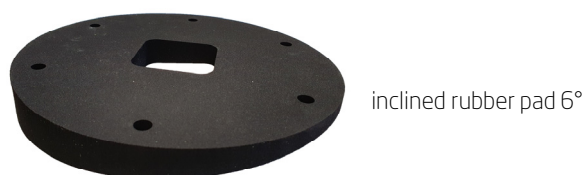
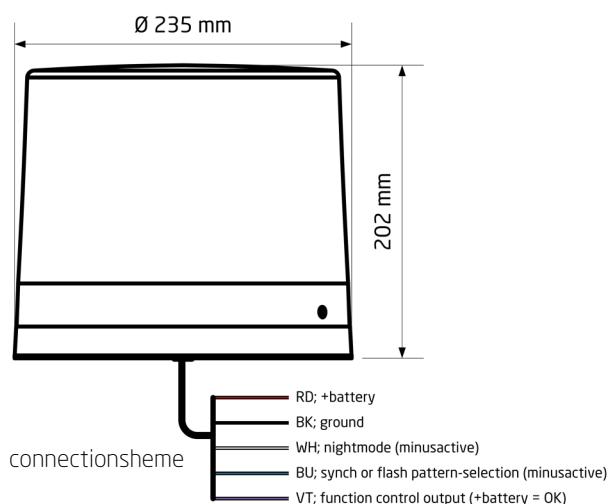
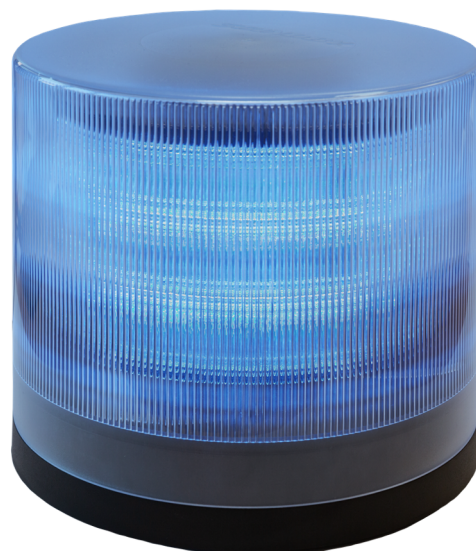
Regardless of whether it is single, double, triple or quad flash, the area of application is flexible, and the flash pattern can be set according to customer specifications.

All lightning patterns are approved according to ECE R65 TB2.

Several B2 RHODON max Basic can be synchronized.

Product features:

- **Easy installation**
- **36 high power LEDs**
- **12/24 V capable**
- **Day / night approval (class 2)**
- **Single, double, triple and quad flash adjustable**
- **Function control output**
- **Can be synchronized with other lights**
- **Fastening in accordance with DIN14620, "B2" 200 pitch circle using 3 screws in a 120 ° arrangement**
- **Approved according to ECE R65 TB2**



article number	description
008520100651	B2 RHODON max Basic
008520009652	6° inclined rubber pad

TECHNICAL DATA

operating voltage	12 / 24 VDC (10 ... 30 VDC)
current consumption	at 12 V: 1.9 ... 2.9 A at 24 V: 1.1 ... 2.0 A (according adjusted flash pattern) $I_{PEAK} < 5 A$
amount of LEDs	36 high power LEDs
Flash pattern	single-, double-, triple-, quad-flash according ECE R65 TB2
light intensity	140 cd in night mode 280 cd in day mode
mounting forms	built-on-mounting, 200er bolt circle (according DIN14620, B2)
cable	approx. 400 mm
temperature range	- storage / transport -40 °C ... +90 °C - operation -30 °C ... +50 °C
dimensions	- diameter 235 mm - height 202 mm
approvals	light E1-TB2-005193 according ECE R65 Class 2 EMC E6-10R-051278 according ECE R10