

LED-Displays

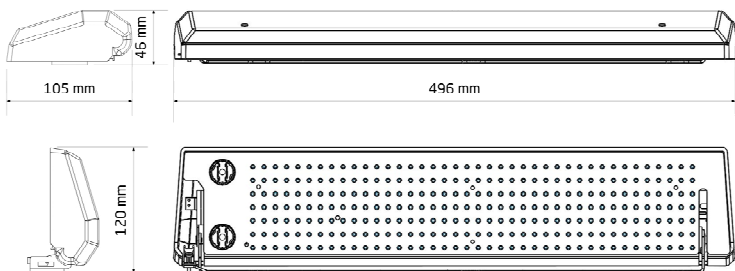
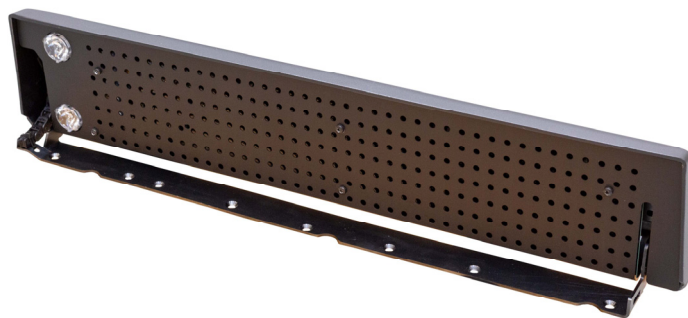
Dashboard-Display DD-xxx

The dashboard display DD-xxx was developed for vehicles in which a light bar with an integrated display would exceed the maximum vehicle height.

It is mounted discreetly on the dashboard and pops up when switched on. After switching off, it closes again automatically so as not to obstruct the view to the front.

Product features:

- Flat LED display
- 400 mm full matrix display
- Control via CAN bus
- Several individual texts can be preconfigured
- With and without "Flasher Red" for the stopping process



TECHNICAL DATA

nominal voltage	12 VDC
operating voltage	10.8 ... 14.4 VDC
current consumption	0 A (< 1 mA in bus-operation mode) 1 A max.
ambient temperature	-25 °C ... +70 °C - storage / transport -40 °C ... +80 °C
LED-colour	red
weight	approx. 1.3 kg
dimensions (w x h x d)	- shut down 496 x 46 x 105 mm - open 496 x 120 x 105 mm
approval	EMC acc. ECE R10