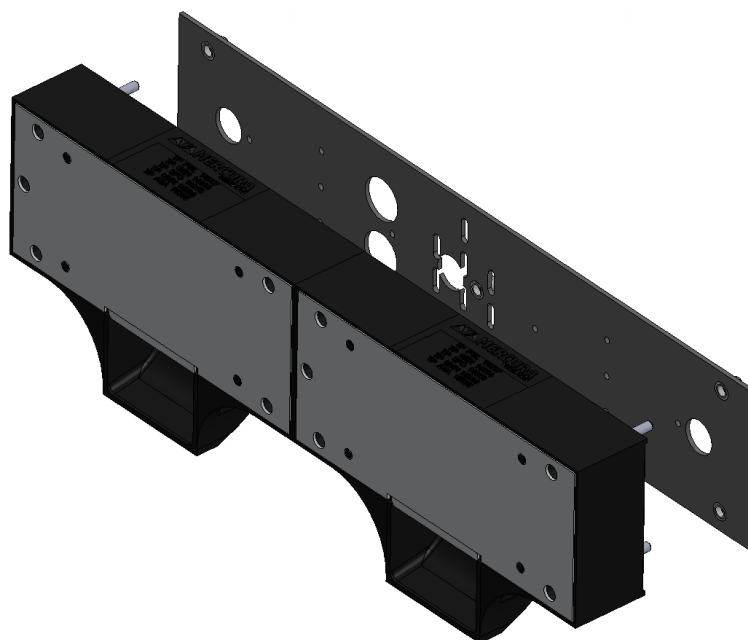


MDB 120

Siren and speaker unit built into the number plate



1. WARNING	2
2. CHARACTERISTICS	4
3. L52 LIGHTS OPTION.....	5
4. MOUNTING INSTRUCTIONS	5
4.1. CASE N°1.....	5
4.2. CASE N°2.....	6
4.3. ELEMENTS FOR BUMPER DRILLING	6
4.4. DRILLING MEASUREMENTS.....	Erreur ! Signet non défini.
4.5. NUMBER PLATE RIVETING LOCATION	Erreur ! Signet non défini.
5. WIRING DIAGRAM	8

1. WARNING



LIMITS OF LIABILITY

The products have been developed in accordance with standards and regulations in force. The information gathered in the technical documentation takes into account the state of the art as well as the knowledge and experience acquired over many years.

MERCURA is not responsible for damages and consequences due to:

- Non-compliance with the information provided by the product documentation
- Non-compliant use of the product
- The mounting and application of products made by unskilled personnel
- Unauthorized changes made by the user or the operator on their own
- Technical modifications not submitted to or approved by MERCURA
- Use of spare parts not approved by MERCURA

RESPONSIBILITIES OF THE INSTALLER

The installer is fully responsible for the mounting of equipment on a vehicle.

The installer must define the means and the material necessary for mounting of equipment in order to deliver the vehicle equipped according to the regulations.

MERCURA is not responsible for failures occurring due to incorrect definition of the type of mounting system, reinforcements, drilling holes in roof panel, state and quality of mounting system, use of vehicle manufacturer anchoring points and the system power supply and protection definition in accordance with the vehicle energy source.

RESPONSIBILITIES OF THE USER AND OF THE OPERATOR

MERCURA products are professional equipment that must be used for this purpose only. Their implementation is subject to legal obligations in terms of safety at work to which the operator must submit. The same applies to safety and accident prevention regulations as well as environmental protection rules. The use of this equipment on the road is subject to compliance with traffic laws and regulations.

Obligations of the operator:

- To keep informed about the regulations in force concerning the safety at work
- To conduct a risk analysis of specific work conditions at the site of intervention
- To adapt user training to regulations, standards and conditions of use

- When using the equipment to regularly check the adequacy of the rules of implementation with the safety rules and standards in force.
- To ensure that operators have read and understood the equipment user manual.
- To ensure that users are regularly trained in the use and informed of the hazards associated with the implementation of the equipment.
- To provide personnel with protective equipment adapted to the intervention and to ensure their use.

It is the responsibility of the operator:

- To ensure the curative and preventive maintenance of equipment
- To ensure that safety devices are regularly checked

CUSTOMER SERVICE

For any technical information, the MERCURA CUSTOMER SERVICE is at your disposal:

- Website: <http://www.mercura.fr/> technical assistance section
- E-mail: support@mercura.fr
- Phone number: +33 (0)2.54.702.702

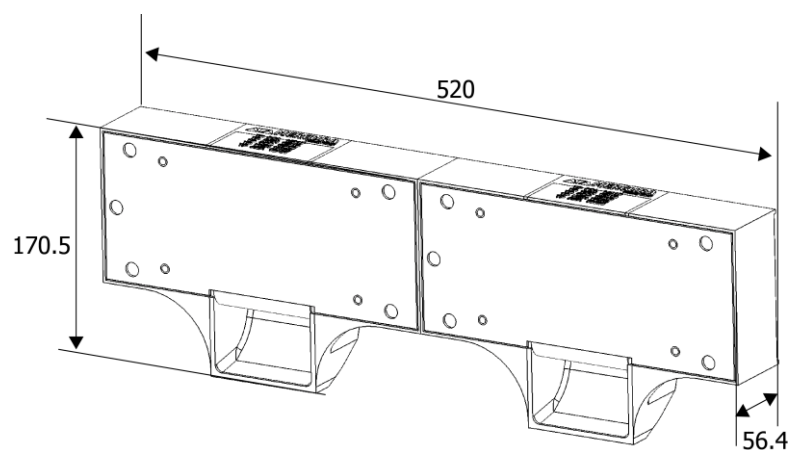
Our service is available from Monday to Friday from 08.30 am to 12 and from 1.30 pm to 5 pm. (Friday until 4 pm).

In the spirit of continuous improvement, our staff is at your disposal for any question you might have concerning the installation and the use of our products.

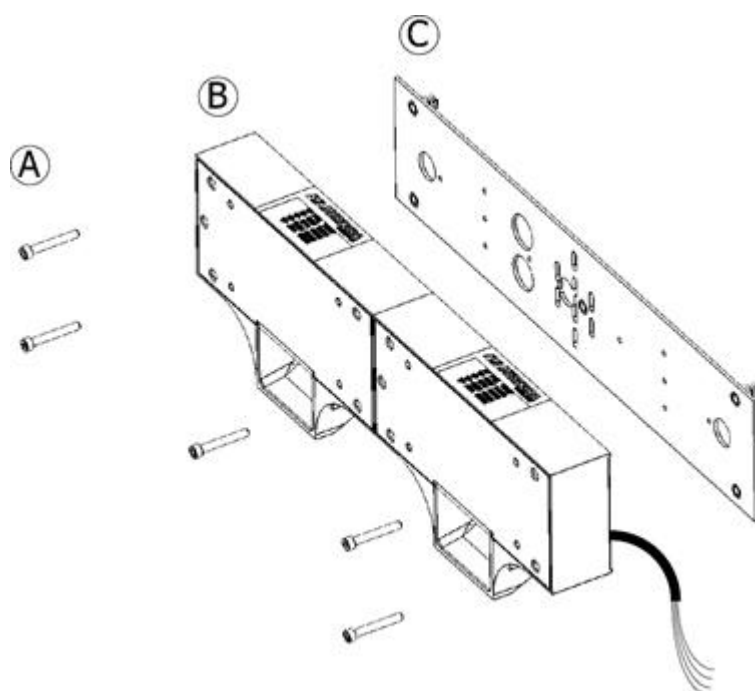


Head Office: Zone d'Activités « Les Gailletrous » - rue Louis Pasteur-
41260 LA CHAUSSEE SAINT VICTOR

2. CHARACTERISTICS



- WEIGHT : around 3 kg
- VOLTAGE: 10 - 30 VOLTS
- CONSUMPTION:
 - 4.7 A / 13.5 V
 - 2.4 A / 27 V

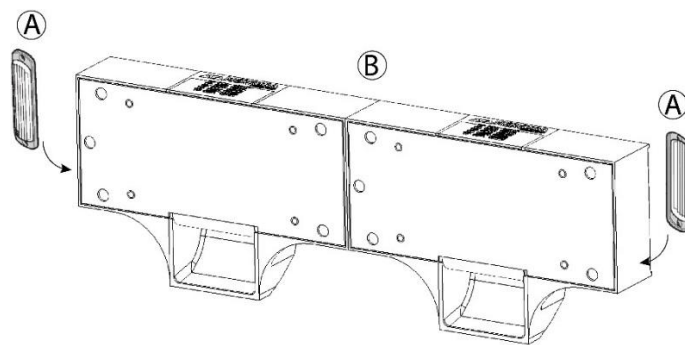


- A. 5 FIXING SCREWS 06X45
- B. MDB 120
- C. MOUNTING COUNTER-PLATE (N°1 TYPE INSTALLATION)



- APPLY TREADLOCK TYPE LOCTITE 243 ON SCREWS 06X45
- TIGHTEN SCREWS TO TORQUE OF 2N / m WITH DYNAMOMETRIC KEY

3. L52 LIGHTS OPTION



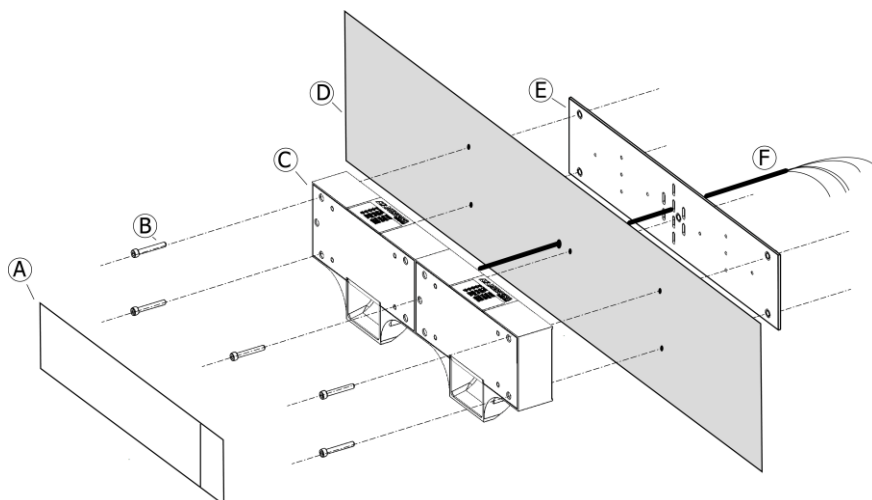
- A. L52 LIGHTS
- B. MDB 120

□ ADDITIONAL CONSUMPTION:

- 1 A at peak for 13.5V / 0.5 A at peak for 27 V
- 0.7 A on average for 13.5 V / 0.35 A on average for 27 V

4. MOUNTING INSTRUCTIONS

4.1. CASE N°1



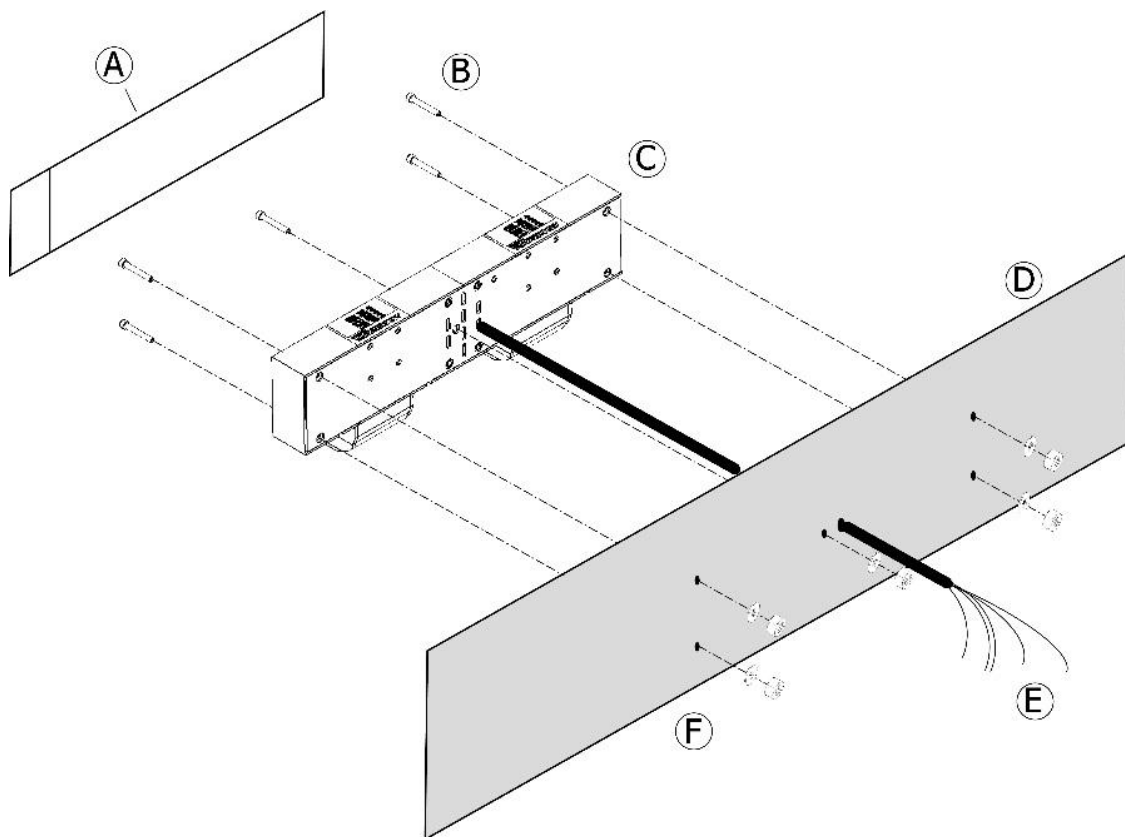
- A. VEHICLE'S NUMBER PLATE TO RIVET
- B. MDB 120 FIXING SCREW
- C. MDB 120
- D. VEHICLE'S BUMPER
- E. MDB 120 COUNTER-PLATE
- F. MDB 120 WIRING LOOM

*To mount the number plate: drill the plate and the MDB 120 on the left and right sides and rivet the 2 elements together on the aluminium reinforcements.



- APPLY TREADLOCK TYPE LOCTITE 243 ON SCREWS 06X45
- TIGHTEN SCREWS TO TORQUE OF 2N / m WITH DYNAMOMETRIC KEY

4.2. CASE N°2

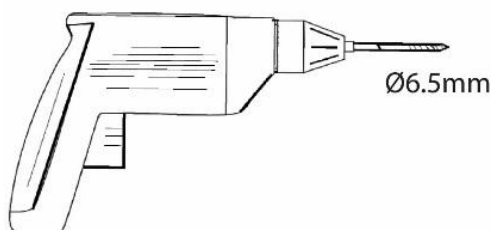


- A. VEHICLE'S NUMBER PLATE
- B. FIXING SCREW 06x45
- C. MDB 120
- D. VEHICLE'S BUMPER
- E. FIXING WASHER
- F. LOKING NUTS
- G. POWER SUPPLY AND CONTROL WIRES



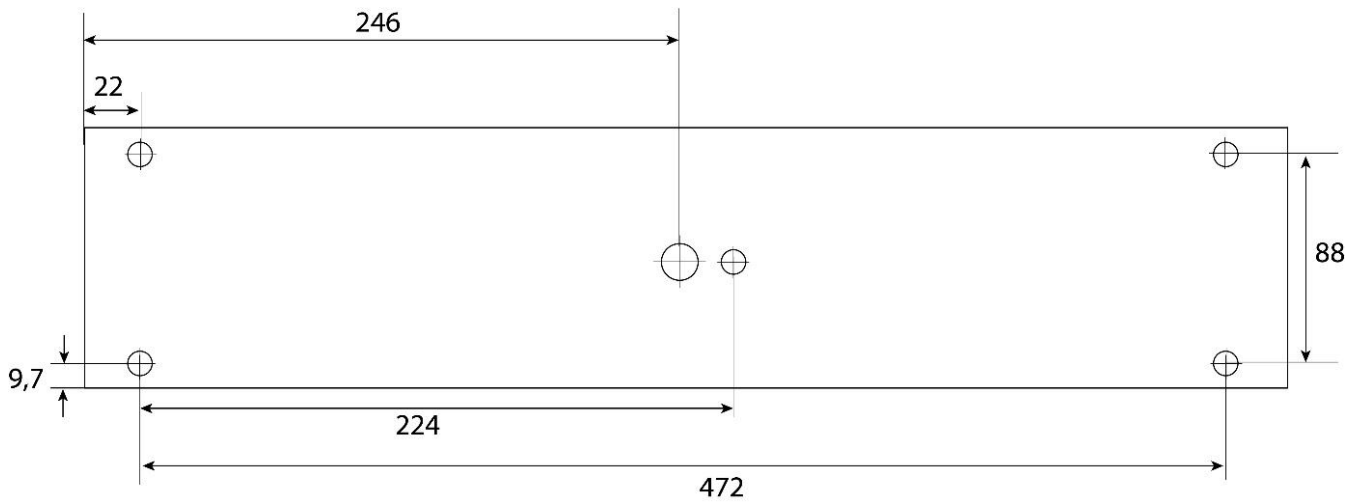
- APPLY TREADLOCK TYPE LOCTITE 243 ON SCREWS 06X45
- TIGHTEN SCREWS TO TORQUE OF 2N / m WITH DYNAMOMETRIC KEY

4.3. ELEMENTS FOR BUMPER DRILLING

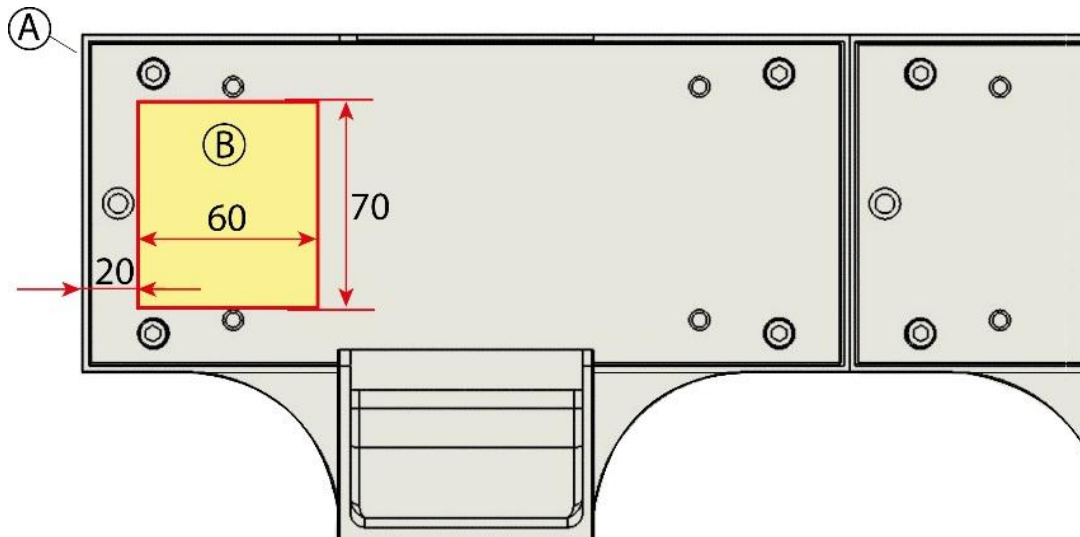


4.4. DRILLING MEASUREMENTS

MDB 120 rear view



4.5. NUMBER PLATE RIVETING LOCATION



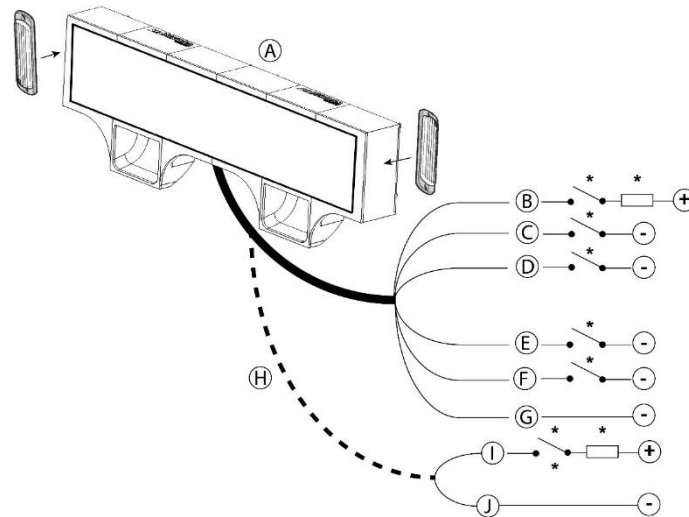
- A. MDB 120 (LEFT SIDE FRONT VIEW)
- B. NUMBER PLATE RIVETING LOCATION

NOTE: Right side riveting location dimensions are similar.

5. WIRING DIAGRAM

The following wiring diagram shows all the available wires for a full option multi-tone MDB 120. Some wires will therefore be missing in some versions.

! ONLY CONNECT THE WIRES TO BE USED. ISOLATE THE UNNECESSARY WIRES.



* Power switches or fuses are not provided

- A. MDB 120
- B. 0.75mm² RED WIRE POWER SUPPLY FOR SYREN AND TONE CONTROL N°1
- C. 0.35mm² ORANGE WIRE SIREN TONE N°2 CONTROL TO GROUND
- D. 0.35mm² WHITE WIRE SIREN TONE N°3 CONTROL TO GROUND
- E. 0.35mm² YELLOW WIRE SIREN TONE N°4 CONTROL TO GROUND
- F. 0.35mm² GREEN WIRE SIREN NIGHT MODE CONTROL TO GROUND
(DEPENDING ON SIREN TONE)
- G. 0.75mm² BLACK WIRE SIREN POWER GROUND
- H. L52 LIGHTS OPTION WIRE
- I. RED WIRE L52 LIGHTS POWER SUPPLY
- J. BLACK WIRE L52 LIGHTS POWER GROUND