

T4 Touch Panel

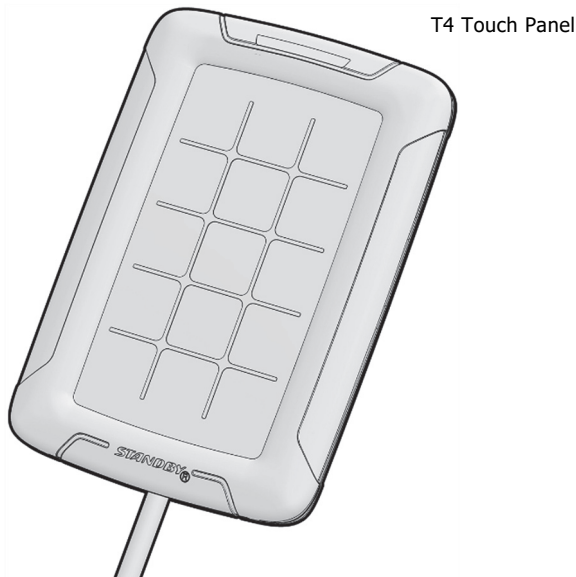
Thank you for choosing a product from Standby.

Technical Data

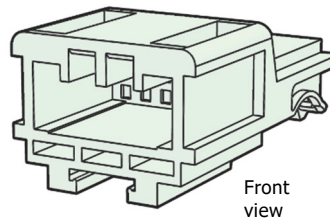
Supply voltage	+10–30 VDC
Current consumption	260 mA Standby current < 1 mA
Recommended fuse	1 A
Interface	CAN
Cable length	50 cm
Light sensor	Yes
Enclosure class	IP65
Housing material	PC-PBT

Dimensions	w126.0 x h87.0 x d19.5 mm
Weight	170 gr
Mounting	M3 screws (4 pcs)
Approvals	ECE R10
Tests performed	According to applicable parts of SS-ISO 16750-3 and SS-ISO 16750-4 2010
Ambient temperature	-20°C to +70°C (operating) -30°C to +80°C (storage/transport)

Included



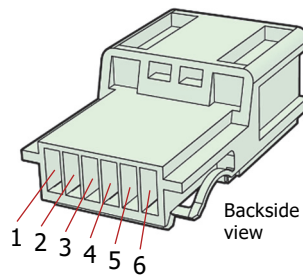
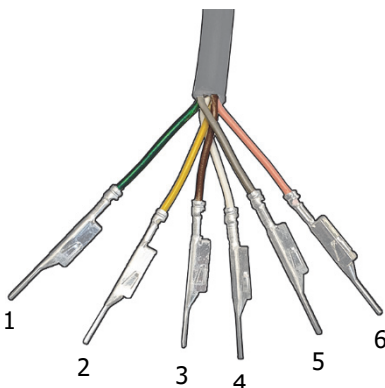
Connector house: JAE IL-AG5-6P-S3C1



Not included

Mating connector house: JAE IL-AG5-6S-S3C1
Mating socket connectors: JAE IL-AG5-C1-5000
Mounting screws: M3 x 4

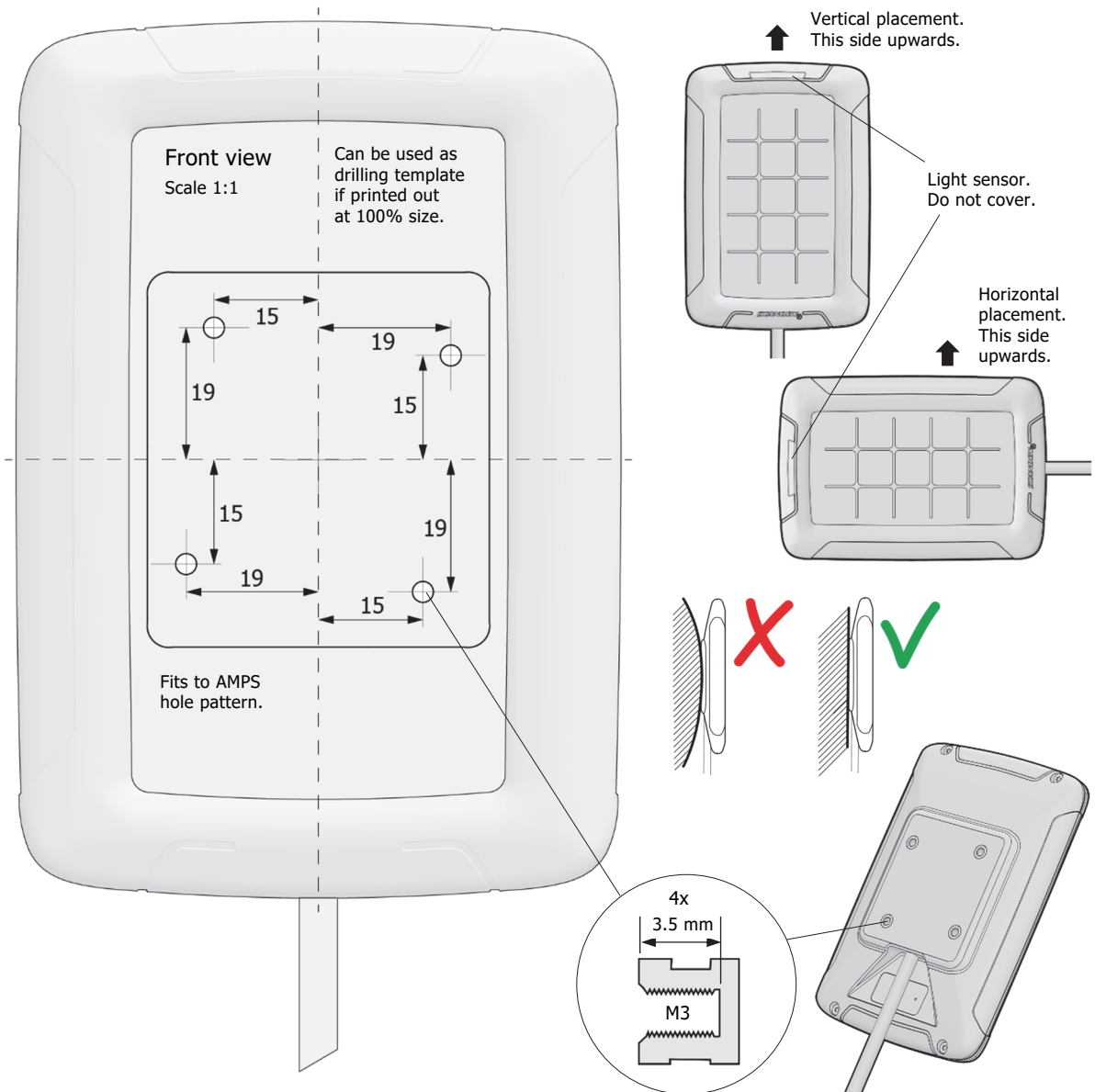
Connection



Pinout

PIN	WIRE	SIGNAL
1	Green	CAN Low 1
2	Yellow	CAN High 1
3	Brown	CAN Low 2
4	White	CAN High 2
5	Grey	Ground (0V)
6	Pink	+10–30 VDC

Mounting



Cleaning Instruction



- Switch off the device and wait for it to cool down.
- Use a clean microfiber cloth. Avoid rough cloths, towels, paper towels and similar items.
- Moisten the microfiber cloth with a little water, for stubborn stains a screen cleaner designed for computer screens can be used.
- Wipe slow and gentle to avoid damage, wipe dry with a dry microfiber cloth.
- Do not spray water/screen cleaner directly on the unit. Never use a soaked cloth. This prevents moisture from entering the unit.

Compatible Products

For more information regarding compatible products: www.standbygroup.com

Standby will not be held liable for improper installation or use of this product. Please follow all instructions provided. Professional advice and proper installation of the Standby products by an authorized Standby Partner are recommended to provide maximum safety and function.