

Matrix Display using external Mobile Data Terminal (MDT).

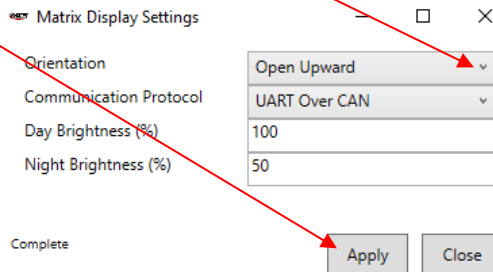
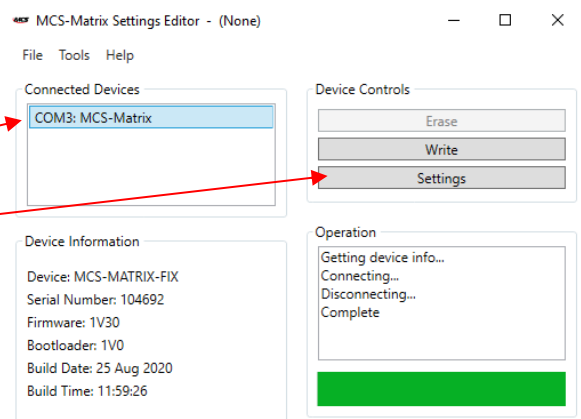
Inverting text orientation when the Matrix is programmed to read messages from an external connected MDT unit.



1. Download the following software using Hyperlink below.
 - a. You will need to select 'More Info' then Run Anyway.

Matrix Settings Editor

2. Open software, using a standard USB A Male to USB B Mini-Male data cable connect the Matrix Display to the Laptop. **Note: The Matrix Display should not be powered at this time, power is supplied by the data cable.**
3. Select the connected device.
4. Select 'Settings'.
5. On the Orientation drop down menu change to the opposite selection ie 'Open Downward' then select 'Apply'.



6. If for any reason you require the use of the Original G4 Handset, then the Communication Protocol drop down menu will need changing from 'UART Over CAN' to 'CAN', again select 'Apply'.
 - a. The Matrix can then be controlled using the Handset.