



6-LED NARROW PROFILE LIGHTHEAD



FEATURES

- 0.62" (15.79mm) Narrow profile with remarkable Class 1 output in Horizontal or Vertical mount.
- Universal Multi-Angle Bracket, mounting virtually anywhere.
- Brand-new unique optical design for efficient and powerful output.
- ECE R10 EMC Compliance.
- Long life LEDs rated to 100,000 hours of operation.
- Non-volatile memory recalls last flash pattern used at power up.
- Multi-units synchronization in simultaneous or alternating flash.
- Reverse polarity protection.
- Weatherproof and vibration resistant design for internal or external use.
- Solid aluminium housing for efficient heat dissipation and maximum durability.

SPECIFICATIONS

Compliance: ECE R65 (XA1, XB1); ECE R10; SAE J595 Class1; CA Title 13; IPX8

LED Elements: High-power LED x 6pcs

No. of Warning Patterns: 23

Operating Voltage: 12~24VDC

Average Current: 0.57A @12VDC / 0.29A @24VDC (varies with flash pattern)

Max. Current: 1.14A @12VDC / 0.57A @24VDC

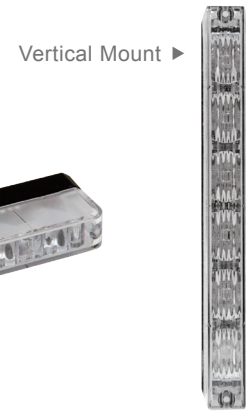
Average Power: 6.85 Watts (varies with flash pattern)

Max. Power: 13.7 Watts

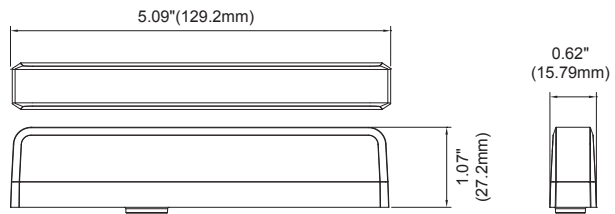
Wires: Red-Vcc : 25cm (20AWG)
Black-GND : 25cm (20AWG)
Yellow-Sync & Functions : 25cm (20AWG)

Fuse Rating: 2A

LED Colour: RED , BLUE , AMBER , WHITE



DIMENSIONS



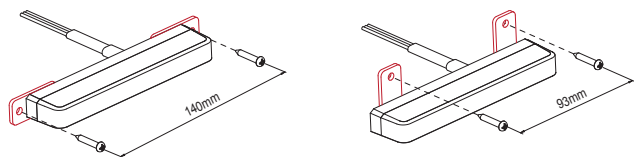
FLASH PATTERN

Flash Patterns				
1	Double	[R65]	13	Single H/L (split)
2	Single	[2Hz]	14	Single [SAE/CA13]
3	Triple	[2Hz]	15	Double [SAE]
4	Quad	[2Hz]	16	Quad [SAE]
5	Random		17	Quint [SAE]
6	Single	(split)	18	Mega
7	Double	(split)	19	Ultra [SAE]
8	Quad	(split)	20	Single-Quad
9	Quint	(split)	21	Single H/L
10	Mega	(split)	22	Steady Half
11	Ultra	(split)	23	Steady All
12	Single-Quad	(split)		

*split = Left alternating Right

MOUNTING BRACKETS

Universal Bracket (Multi-Angle)



L-Bracket (Front / Rear)

