



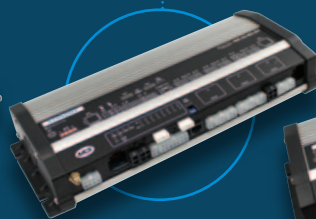
MCS-NX8



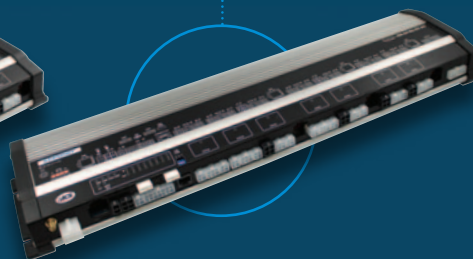
MCS-NX16



MCS-NX32



MCS-NX64



MCS-NX RANGE OF

Next Generation Control Units

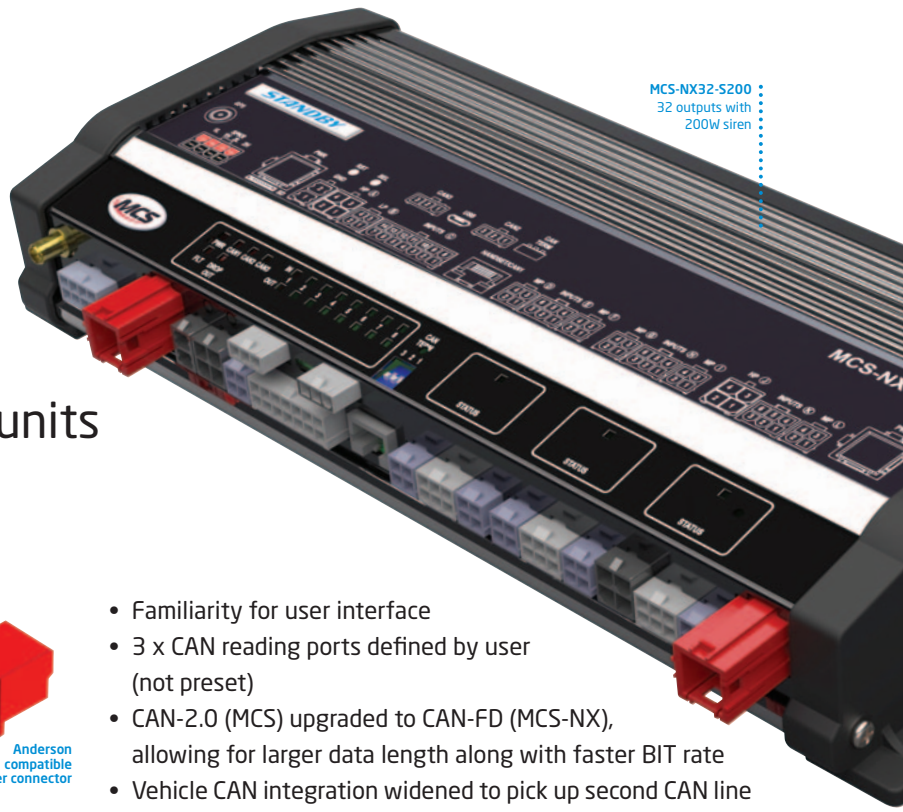
ADVANCED CONTROL SYSTEMS FOR ALL YOUR EMERGENCY, RECOVERY AND UTILITY SERVICE VEHICLE EQUIPMENT

Multiple Standby RSG human machine interface options...



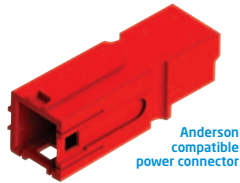
MCS-NX32-S200
32 outputs with
200W siren

The all new MCS-NX range of next generation control units

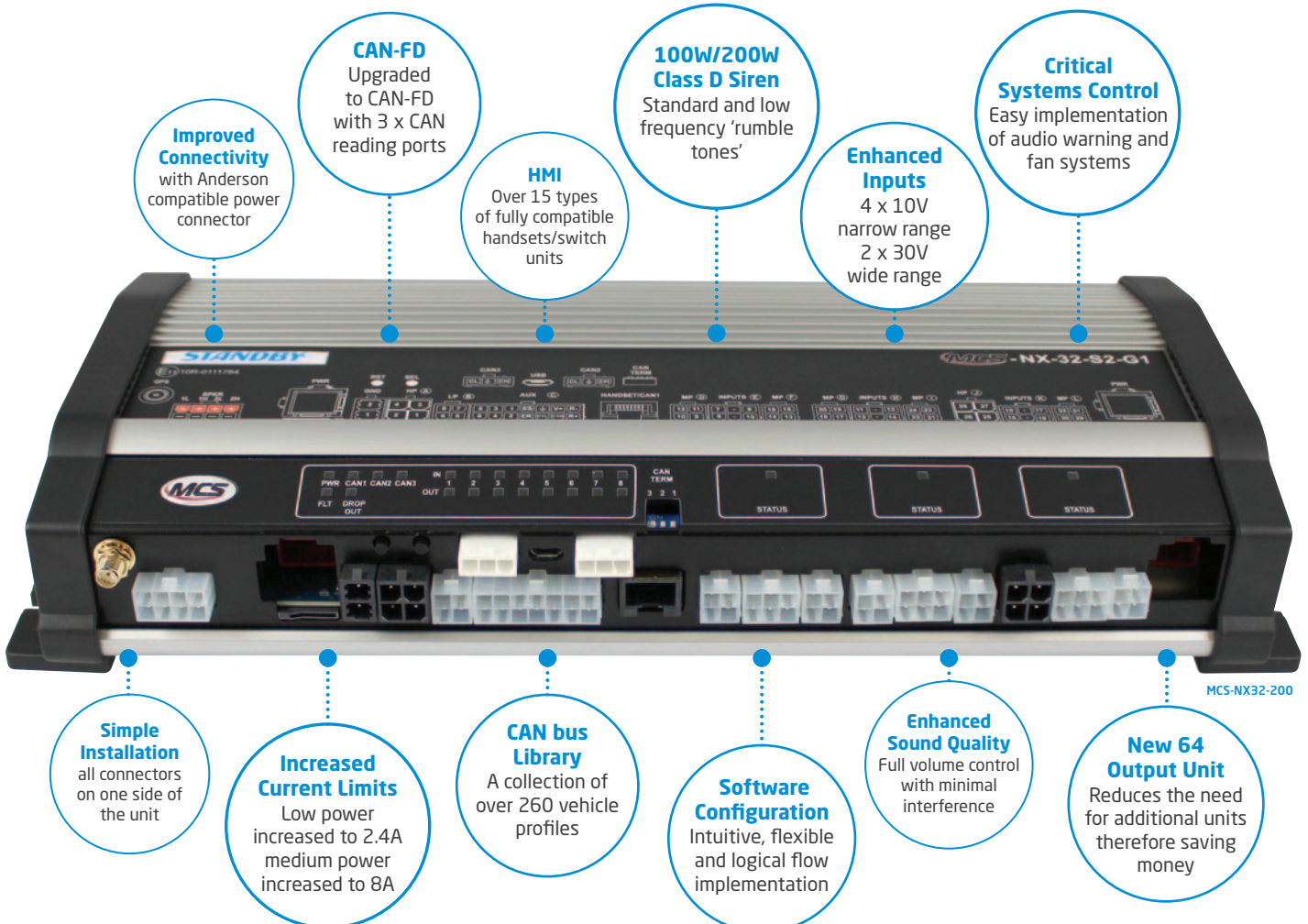


PRODUCT ADVANTAGES

- Reduced loom length
- Easier to install
- Improved connectivity
- All new configuration software
- Easier diagnostic and fault finding
- Reduced need for additional units
- Medium power outputs current limit increased to 8A
- Low power output current limit increased to 2.4A
- Greater scope during installation for product control allowing for increased load shedding capability
- Flash pattern selectable for group flashing
- Multifunction outputs priority based
- Fully compatible with existing MCS handsets/switch units
- Familiarity for user interface
- 3 x CAN reading ports defined by user (not preset)
- CAN-2.0 (MCS) upgraded to CAN-FD (MCS-NX), allowing for larger data length along with faster BIT rate
- Vehicle CAN integration widened to pick up second CAN line if required
- Class D siren amp for enhanced sound quality with minimal interference (PA)
- Built-in low frequency capability
- Full volume control for workshop/city mode
- Dual voltage - 12v and 24v operation
- Reduced weight



Anderson compatible power connector



ADVANCED FEATURES AND FUNCTIONS

Connections

- Single 70A Anderson power connection
 - NX8 x 1
 - NX16 x 1
- Multiples for larger models
 - NX32 x 2
 - NX64 x 4
- All connections on one side of enclosure

Inputs

- Enhanced inputs
 - Narrow Range x 4 - wake up configurable
Pull up or pull down (configurable), 10V range
 - Wide Range x 2
Pull up or pull down (configurable), 30V range
 - Inputs used for data input i.e. temperature sensors for dog kennels
- Digital inputs - positive switched pulled down only
 - MCS-NX16 x 4
 - MCS-NX32 x 12
 - MCS-NX64 x 28

Outputs

- MCS-NX8
 - High power 20A x 4
 - Low power 2.4A x 4
- MCS-NX16
 - High power 20A x 4
 - Medium power 8A x 8
 - Low power 2.4A x 4

- MCS-NX32
 - High power 20A x 8
 - Medium power 8A x 20
 - Low power 2.4A x 4

- MCS-NX64
 - High power 20A x 20
 - Medium power 8A x 40
 - Low power 2.4A x 4

Multi-Way Switch Options

- CAN handsets/switch units
 - Programmable button configuration
 - 64 colour choices
 - Multiple handset/switch unit setup
- Touch screen switch panel
 - Screen acts as a CAN switch unit
 - 4 x backup buttons
 - On screen buttons interact as per a standard switch unit
 - Fully configurable button/graphic layouts

CAN bus

- CAN-FD x 3
 - CAN-FD x 2
 - CAN-FD/RS485 x 1
- Vehicle CAN bus
 - Supports over 260 vehicle profiles

- MCS CAN
 - Handsets/switch units
 - Touch screen
 - Expansion modules
 - StandbyRSG CAN devices

Siren

- 100W Class D Siren
 - Differential mic input
 - Full digital audio pathing allowing for full volume control
 - Full dynamic range - standard siren tones and low frequency 'Rumbler Tones'
 - Two optional channels (user defined)
- 200W Class D Siren
 - Differential mic input
 - Full digital audio pathing allowing for full volume control
 - Full dynamic range - standard siren tones and low frequency 'Rumbler Tones'
 - Two optional channels (with selectable outputs)
 - Audio playback from configuration
 - Speed based volume

Approvals

- ECE R10 Approved
- Home Office Spec 5 approved
- VCA approved manufacturing facility

COMPARISON CHART

| | NX RANGE | | | | MCS RANGE | | |
|--------------------------|--------------|--------------|--------------|--------------|--------------|--------------|--------------|
| | NX8 | NX16 | NX32 | NX64 | MCS-8 | MCS-16 | MCS-32 |
| High Power Outputs | 4 x 20A | 4 x 20A | 8 x 20A | 20 x 20A | 4 x 20A | 8 x 20A | 16 x 20A |
| Medium Power Outputs | N/A | 8 x 8A | 20 x 8A | 40 x 8A | N/A | 4 x 2.5A | 4 x 2.5A |
| Low Power Outputs | 4 x 2.4A | 4 x 2.4A | 4 x 2.4A | 4 x 2.4A | 4 x 2.4A | 4 x 0.5A | 12 x 0.5A |
| Weight | 1.38kg | 1.46kg | 2.38kg | 3.64kg | 1.51kg | 1.79kg | 1.93kg |
| Dimensions (with siren)* | 201x142x57mm | 240x142x57mm | 335x142x57mm | 561x142x57mm | 172x142x58mm | 210x142x58mm | 305x142x58mm |

* Versions without a siren are 29mm shorter in width

HUMAN MACHINE INTERFACE

The MCS-NX control units are fully compatible with the existing range of MCS handsets and switch units for the operation of rooftop lighting, secondary lighting and power management.

In addition it has been developed to work with the vehicle OEM touch screen to provide an economical control system that will not compromise on features and functions.



200W SIREN OPTIONS

Unlike the original range of MCS control units, the NX16, NX32 and NX64 are available with 200W siren output.

2 channels, each having 2 selectable outputs allows the unit to produce two different siren tones at the same time giving a 'two vehicle' effect via 2 x 100 Watt speakers, or, scrolled siren sounds via 1 x 200 Watt speaker, plus, either 'simultaneously or separately' a low frequency rumble sound via 1 or 2 x low frequency 100w rumble speakers.

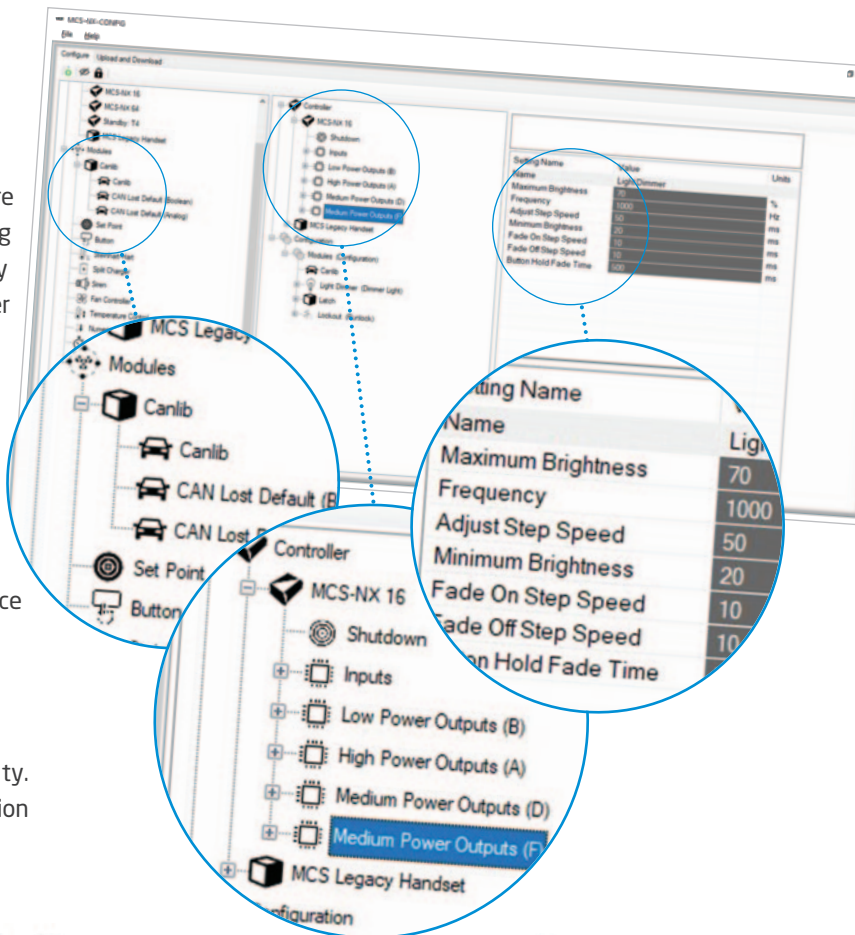
LSP-108
100W Low Frequency
Digital Rumble Speaker



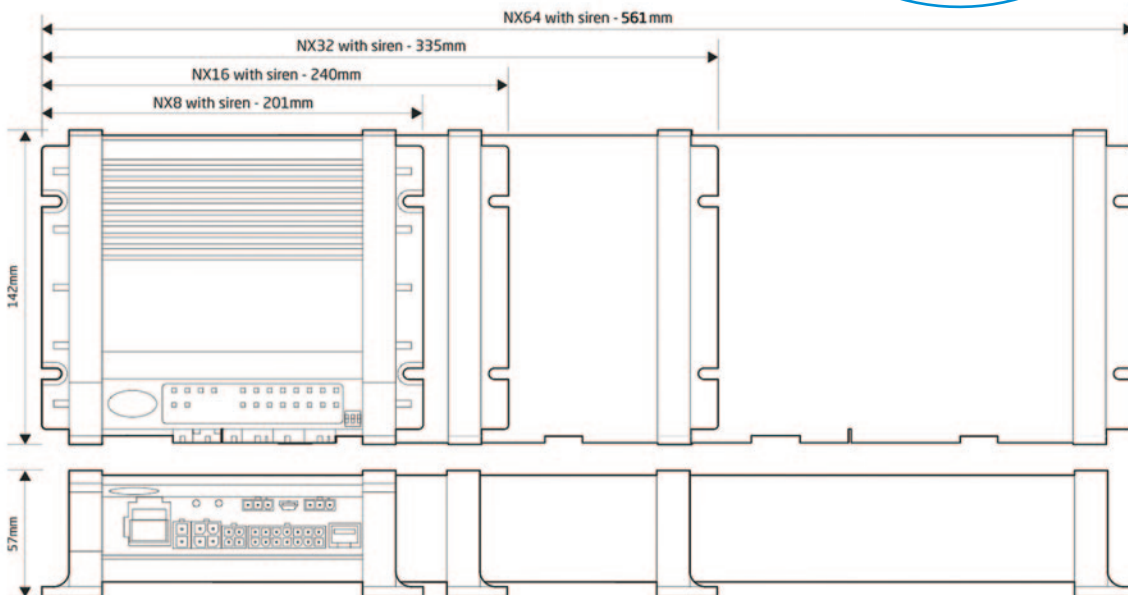
SOFTWARE CONFIGURATION

Improving the intuitiveness of the configuration software was key to the development of the NX range. Incorporating new features and functions in a logical order has greatly enhanced the user experience making the software easier to navigate and understand.

- An intuitive user interface that allows users to interact with the logical flow and modules easily.
- A library of pre-built basic functions and specialised modules that users can drag and drop.
- Drag-and-drop functionality to enable users to place modules in the desired order within the logical flow.
- The settings panel provides a clear and concise interface for configuring module settings.
- Users can define the execution order of modules to ensure the desired logical flow.
- Allows users to define custom modules by specifying inputs, outputs, and the underlying code or functionality.
- Modules have clear labels and icons for easy identification and differentiation.



PRODUCT DIMENSIONS (WITH SIREN)*



* Versions without a siren are 29mm shorter in width

CURRENT MODEL AVAILABILITY

| MCS-NX CONTROL UNITS | | | | | | |
|----------------------|-----------------------|---------|----------------|-------|-----|---------|
| Part Number | Model | Outputs | Audio Intercom | Siren | GPS | Voltage |
| MCS-NX8-NG0 | MCS-NX8 Control Unit | 8 | ✗ | ✗ | ✓ | 12/24 |
| MCS-NX8-SG1 | MCS-NX8 Control Unit | 8 | ✗ | 100W | ✓ | 12/24 |
| MCS-NX16-NG0 | MCS-NX16 Control Unit | 16 | ✗ | ✗ | ✓ | 12/24 |
| MCS-NX16-SG1 | MCS-NX16 Control Unit | 16 | ✗ | 100 | ✓ | 12/24 |
| MCS-NX16-SG2 | MCS-NX16 Control Unit | 16 | ✗ | 200 | ✓ | 12/24 |
| MCS-NX32-NG0 | MCS-NX32 Control Unit | 32 | ✗ | ✗ | ✓ | 12/24 |
| MCS-NX32-SG1 | MCS-NX32 Control Unit | 32 | ✗ | 100 | ✓ | 12/24 |
| MCS-NX32-SG2 | MCS-NX32 Control Unit | 32 | ✗ | 200 | ✓ | 12/24 |
| MCS-NX64-SG2 | MCS-NX64 Control Unit | 64 | ✓ | 200 | ✓ | 12/24 |